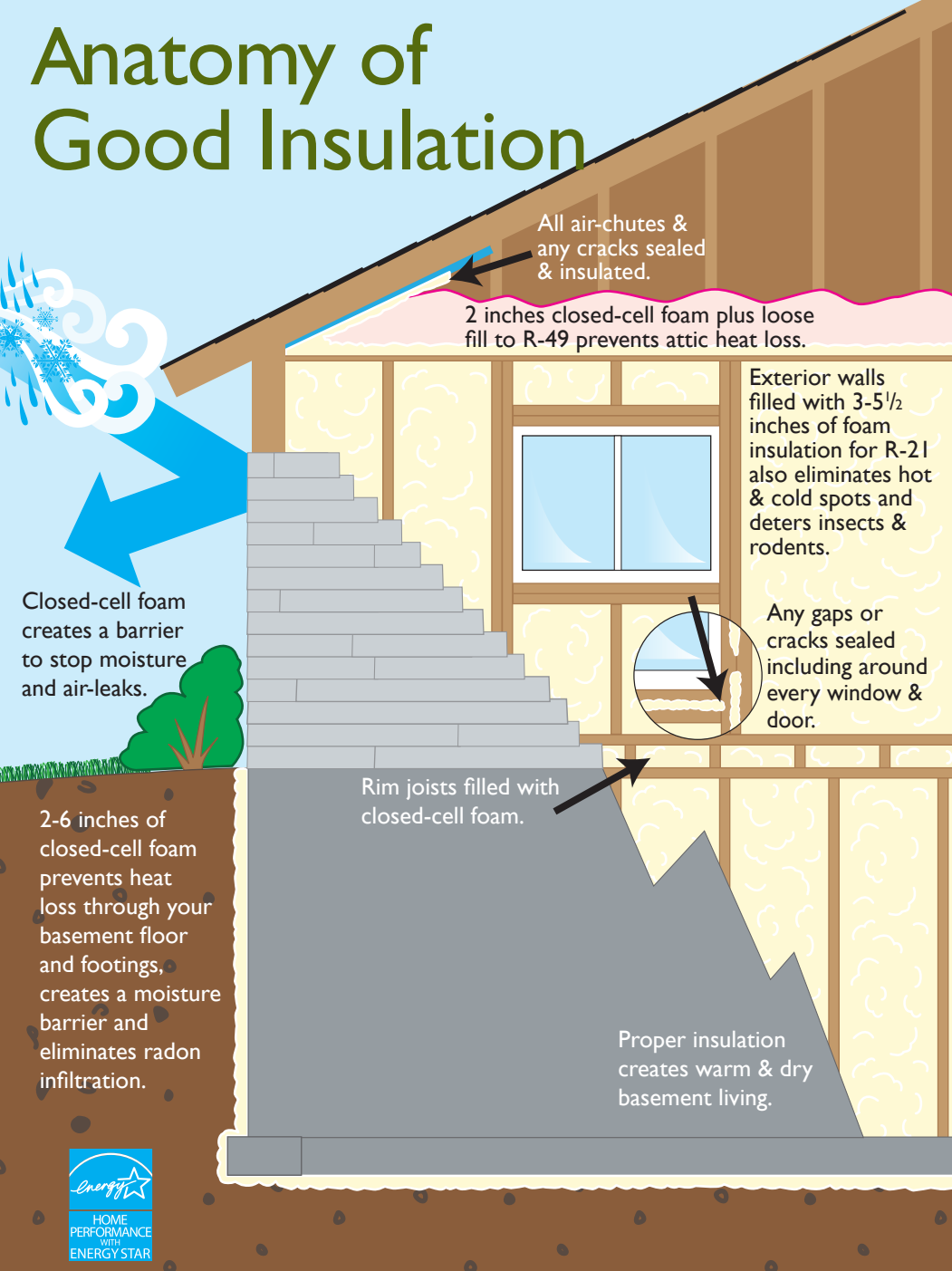


Anatomy of Good Insulation



All air-chutes & any cracks sealed & insulated.

2 inches closed-cell foam plus loose fill to R-49 prevents attic heat loss.

Exterior walls filled with 3-5½ inches of foam insulation for R-21 also eliminates hot & cold spots and deters insects & rodents.

Any gaps or cracks sealed including around every window & door.

Closed-cell foam creates a barrier to stop moisture and air-leaks.

Rim joists filled with closed-cell foam.

2-6 inches of closed-cell foam prevents heat loss through your basement floor and footings, creates a moisture barrier and eliminates radon infiltration.

Proper insulation creates warm & dry basement living.



RESIDENTIAL • COMMERCIAL • AGRICULTURAL • INDUSTRIAL

**POLYURETHANE
SPRAY-FOAM
INSULATION**



**greener
world
solutions**
llc

507-625-FOAM (3626)
507-461-3821

Serving Minnesota, South Dakota,
Wisconsin and Iowa.